

PRO RO HR LF Series

High Rejection Low Fouling Brackish Water RO Elements

PRO RO HR LF is a new family series of membrane elements engineered for use with fouling-prone brackish water applications. PRO RO HR LF elements are recommended for desalination of difficult feed water sources, and retrofit existing RO systems to obtain lower fouling, reduced overall energy usage, increased membrane service life and an extension of operating time between required cleanings, which in turn reduces expenditures on required chemicals.

PRO RO HR LF elements feature a FRP outer wrap and female end connections

Table 1: Element Specification

Membrane	Thin-film membrane (TFM*)
----------	---------------------------

Model	Flow average gpd (m3/day)	Salt rejection average (NaCl) ^{1,2}	Salt rejection minimum (NaCl) ^{1,2}
PRO-RO-370-HR-LF-WT	9,500 (36.0)	99.7%	99.0%
PRO-RO-400-HR-LF-WT	10,200 (38.6)	99.7%	99.0%

¹ Average salt rejection after 24 hours operation. Individual flow rate may vary +25%/-15%.

² Testing conditions: 2,000ppm NaCl solution at 225psig (1550kPa) operating pressure, 77°F, pH7.5 and 15% recovery.

Model	Active Area ft ² (m ²)	Outerwrap	Part Number
PRO-RO-370-HR-LF-WT	370 (34.4)	Fiberglass	3021568
PRO-RO-400-HR-LF-WT	400 (37.2)	Fiberglass	3021569

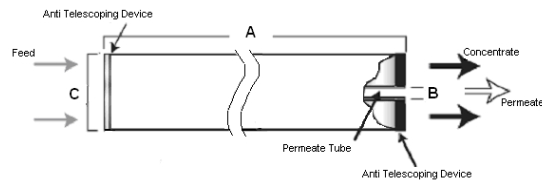


Figure 1: Element Dimensions Diagram

Table 2: Dimensions and Weight

Model ¹	Dimensions, inches (cm)			Boxed Weight lbs (kg)
	A	B ²	C	
PRO-RO-HR-LF-WT	40.0 (101.6)	1.125 (2.86)	7.9 (20.1)	35 (16)

¹ This product ships wet.

² Internal diameter unless specified OD (outside diameter).

Table 3: Operating and CIP parameters

Typical Operating Pressure	200 psig (1,379 kPa)
Typical Operating Flux	10-15GFD (15-25LMH)
Maximum Pressure	600 psig (4,134 kPa)
Maximum Temperature	Operating: 122°F (50°C) Cleaning: 122°F (50°C)
Recommended pH	Optimum rejection pH: 7.0-7.5, Operating Range pH: 4.0-11.0, Cleaning Range pH: 2.0-11.5
Recommended Pressure Drop	Over an element: 12 psig (83 kPa) Per housing: 50 psig (345 kPa)
Chlorine Tolerance	1,000+ ppm-hours, dechlorination recommended
Feedwater	NTU < 1 SDI < 5



Find a contact near you by
visiting ge.com/water or
e-mailing custhelp@ge.com.

Global Headquarters
Trevose, PA
+1-215-355-3300

Americas
Watertown, MA
+1-617-926-2500

Europe/Middle East/Africa
Heverlee, Belgium
+32-16-40-20-00

Asia/Pacific
Shanghai, China
+86 (0) 411-8366-6489

©2007 General Electric Company. All rights reserved.

*Trademark of General Electric Company; may be registered in one or more countries.

FS1284EN